

TERRA BOTANICA - The Tempetarium

Owner : General Council of Maine et Loire
SODEMEL

Place : Park TERRA BOTANICA - Angers - France

Surface : 600 m²

Building costs : 2 M€

Date : Opening : avril 2010

Team : Architect : Jean-Louis MARIN
Scenography : Frédéric RAVATIN (CREATIME)
Landscape : Thierry HUAU (INTERSCENE)
Technical studies : COTEBA
Digital synthesis 3D : Jacques WIEBER (FOUILLET-WIEBER)
Foreman : Jacques HILLERAUD (COTEBA)

Major attraction

AV Production	Scenario	Realisation	AV Equipment
TV Cible Indigènes	F. RAVATIN S. HOURLIER Indigènes	F. HOURLIER Indigènes	P. LEMAIRE ETC
Lighting	Special Scenic Effect	Decor	Special water and ice effects
ETC F. RAVATIN	P. LEMAIRE ETC	J. WIEBER Fouillet-Wieber	M. AMANN Crystal Group

Mission : Concept and architectural programme for the attraction, scenography: studies, management and follow-up

Subject : crossing the oceans in the 18th century

A storm theatre : in this attraction, the elements play their own role: the wind is the wind, the rain is the rain, the sea is animated with real waves. The images are projected onto two giant screens. The closest to the audience is a water curtain.

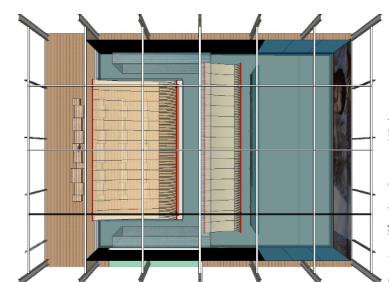
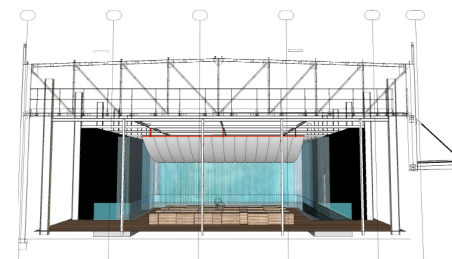
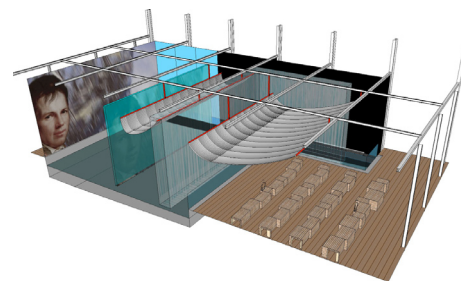
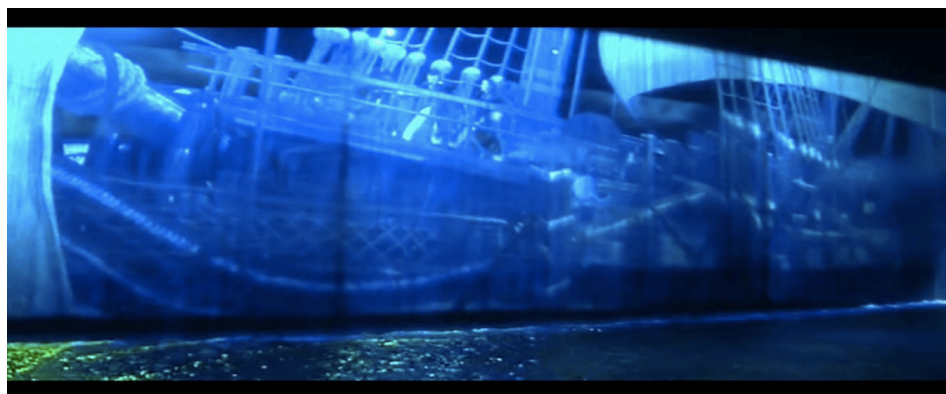
Real cinema : the actors are Charles BERLING and Stéphane FREISSE. All the images of the ship and the sea have been designed in virtual 3D.

Scenario : on board the Pizarro with Bonpland and Humboldt on 16 June 1799. Suddenly a storm blows up. A ghost ship comes dangerously near...

- **Equipment:**
 - giant screen 15 m x 6 m
 - water curtain screen 13.5 m x 5 m
 - water tank 150 m², depth 0.5 - 1 m
 - digital projection 5 projectors, sound 7 + 1, Alcorn Mc Bride control
- **Special effects:**
 - wind, mist, rain, waves, infra-bass sound
 - mirrors for abyssing for marine horizons
 - silk sail
- **Tiered seating :** the platform on which the audience is seated has a putting into motion option.
- **Decors:**
 - ship deck
- **Motorisation:**
 - automated curtain
 - yokes
 - automatic doors
- **Other:**
 - service platform
 - water processing equipment



Capacity : 80 personns	Length of the performance : 7 min.	Rate : 650 p/h
------------------------	------------------------------------	----------------



Dessins d'étude : Jacques Wieber

